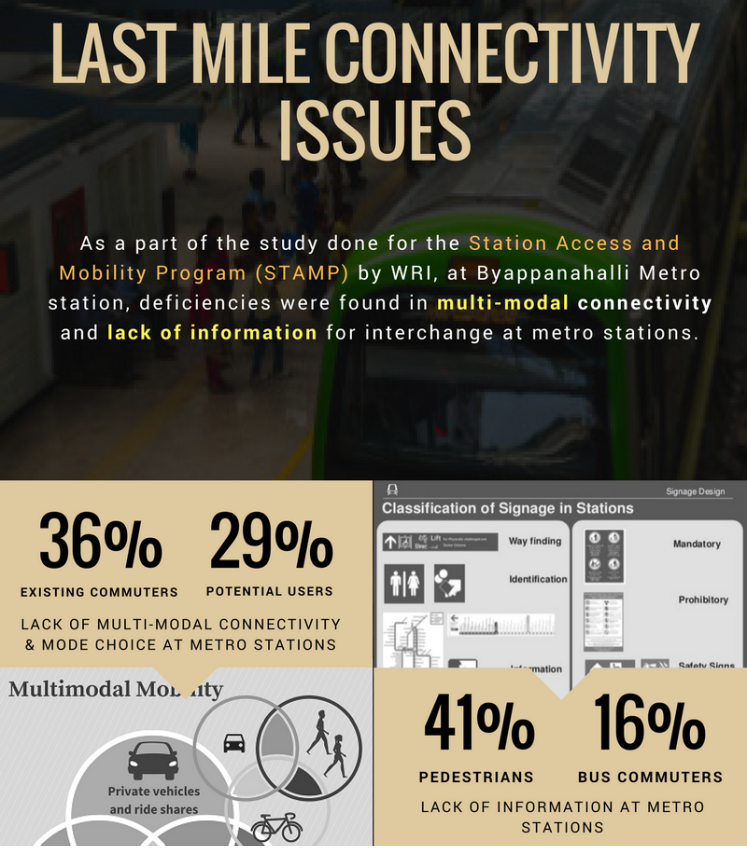
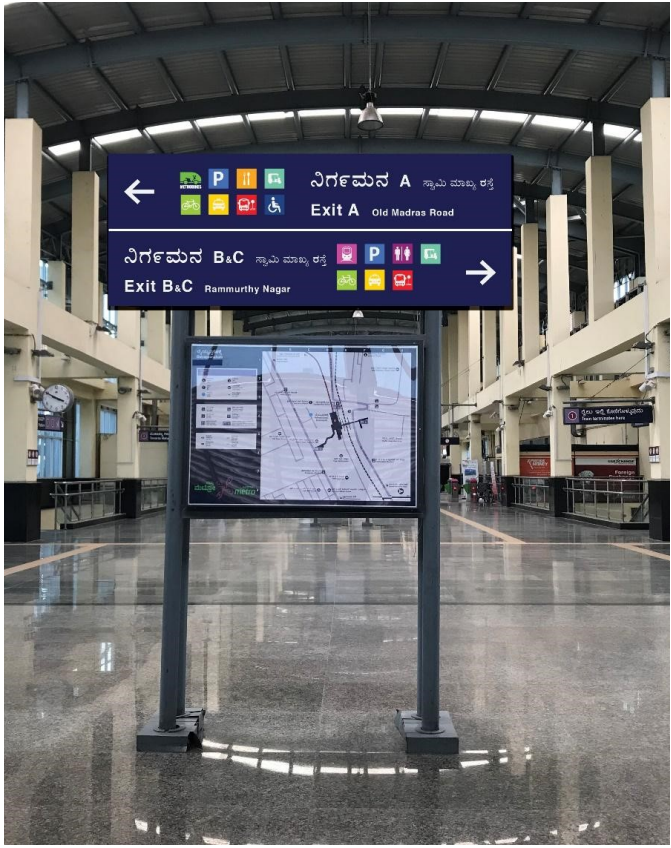


Transportation Accessibility Index

Byappanahalli Metro Station



Existing Way-finding at Concourse level (Fare Area)



Proposed Way-finding at Concourse level (Fare Area)

Information Dissemination and Way Finding Score

The signage audit was conducted on 29 January 2018 at Baiyappanahalli Metro Station and the station received an overall score of **5.5** out of a maximum of **37** possible (**LOS D**) for multi modal signage. It scored **34** out of **92** (**LOS D**) for metro specific signage (amenities, directional, safety, emergency etc.). The score translates to a **LOS D** on an average for all types of signages present at metro station.

Multimodal Integration Score

All three exits at Byappanahalli Metro Station received an average of **LOS C** for their multimodal connectivity. This was majorly due to unavailability of adequate integration for different sustainable modes (public transport, cycling, walking) at all exits. Lack of supporting facilities to cater to these modes like illumination, and surveillance along with unobstructed access was also found to be a major concern while arriving at this score.

